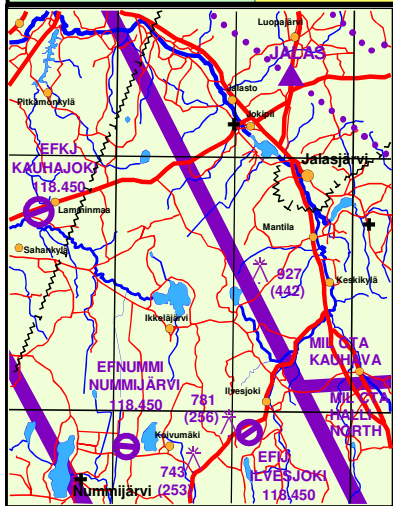
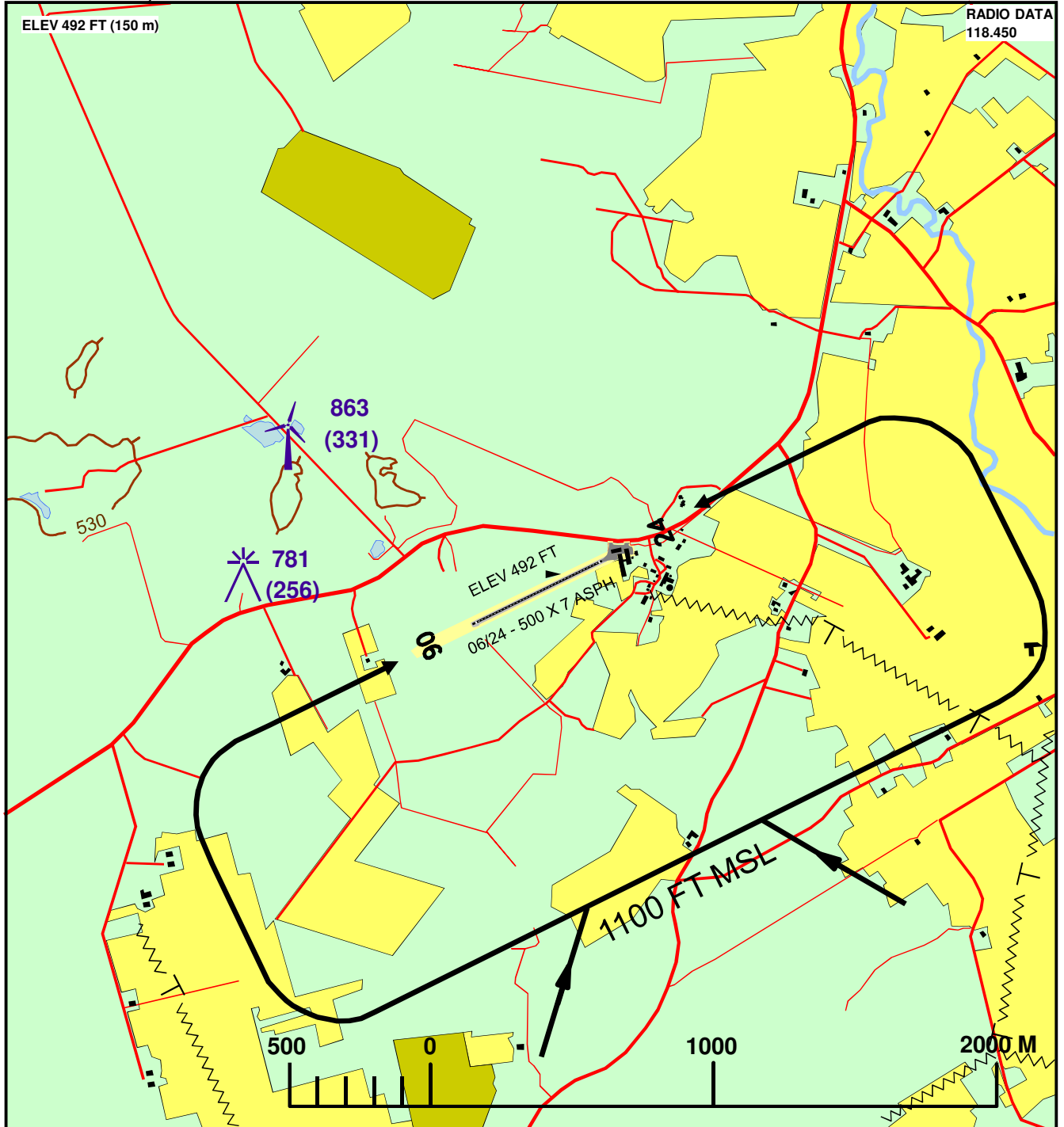


**EFIJ ILVESJOKI
JALASJÄRVI, FINLAND**

LAT 62° 19' 26,8" N
LONG 022° 41' 39,6" E

LANDING CHART



| | | | | | | | |
|-------------------------|--|-----------|------------|----------|----------|------|------|
| LENTOPAIKAN YLLAPITAJA | Marko Mäkinen, tel +358 400 187826 | | | | | | |
| OPERATOR | | | | | | | |
| LENTOPAIKAN OSOITE | Ilvesjoentie 1060, Jalasjärvi | | | | | | |
| AERODROME ADDRESS | | | | | | | |
| AO. ACC-YKSIKKÖ | Tampere ACC, tel +358 3 286 5172 | | | | | | |
| APPROPRIATE ACC UNIT | fax +358 3 286 5199 | | | | | | |
| POLTTOAINEEN SAATAVUUS | Nil | | | | | | |
| FUEL AVAILABILITY | | | | | | | |
| HUOMAUTUKSIA | Yksityinen/Private PPR | | | | | | |
| REMARKS | Kiitotie 24 reunaeste rakennus, korkeus 10 m | | | | | | |
| RWY | RWY BRG | TRH | COORD | DMN M | LDA M | SFC | PAPI |
| 06 | NIA | 621922,3N | 0224123,4E | 500 x 7 | 500 | ASPH | NIL |
| 24 | NIA | 621931,4N | 0224156,6E | 500 x 7 | 500 | ASPH | NIL |
| MAG VAR | ELEV FT (M) | FREQ MHZ | ATIS MHZ | ACC SECT | FREQ MHZ | | |
| 7.2° E (JAN 2010) +0.1° | 492 (150) | 118,450 | NIL | 127,100 | | | |

Kartan tekijä ei vastaa virheistä/Unofficial chart
Kartan mittasuhteet voivat poiketa todellisuudesta/Not in scale

©Pauli Salo 14.12.2012