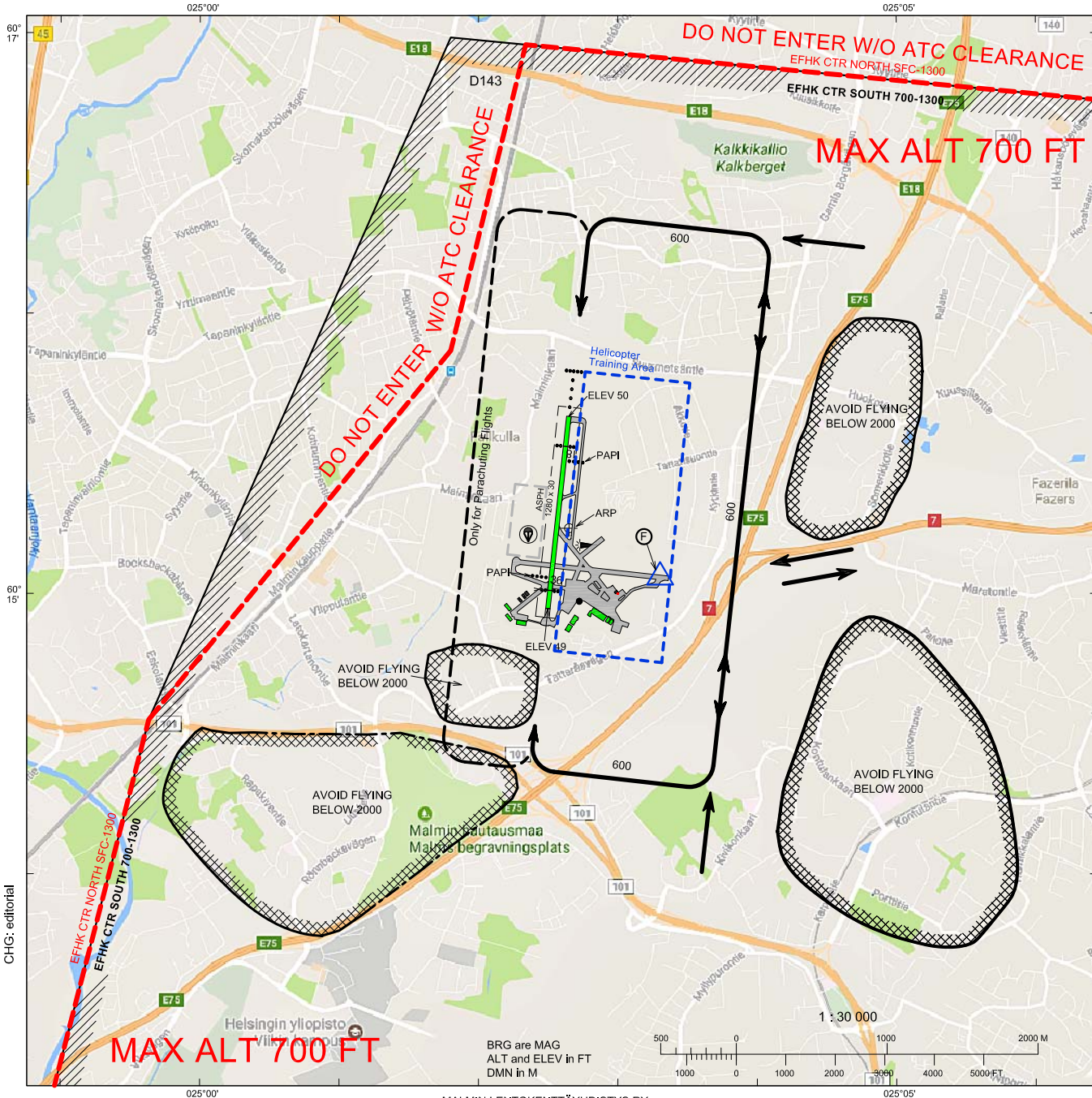


LANDING CHART

LAT 60 15 14 N
LONG 025 02 39 E

ELEV 58 FT

HELSINKI - MALMI AERODROME
HELSINKI, FINLAND



AERODROME LIGHTING

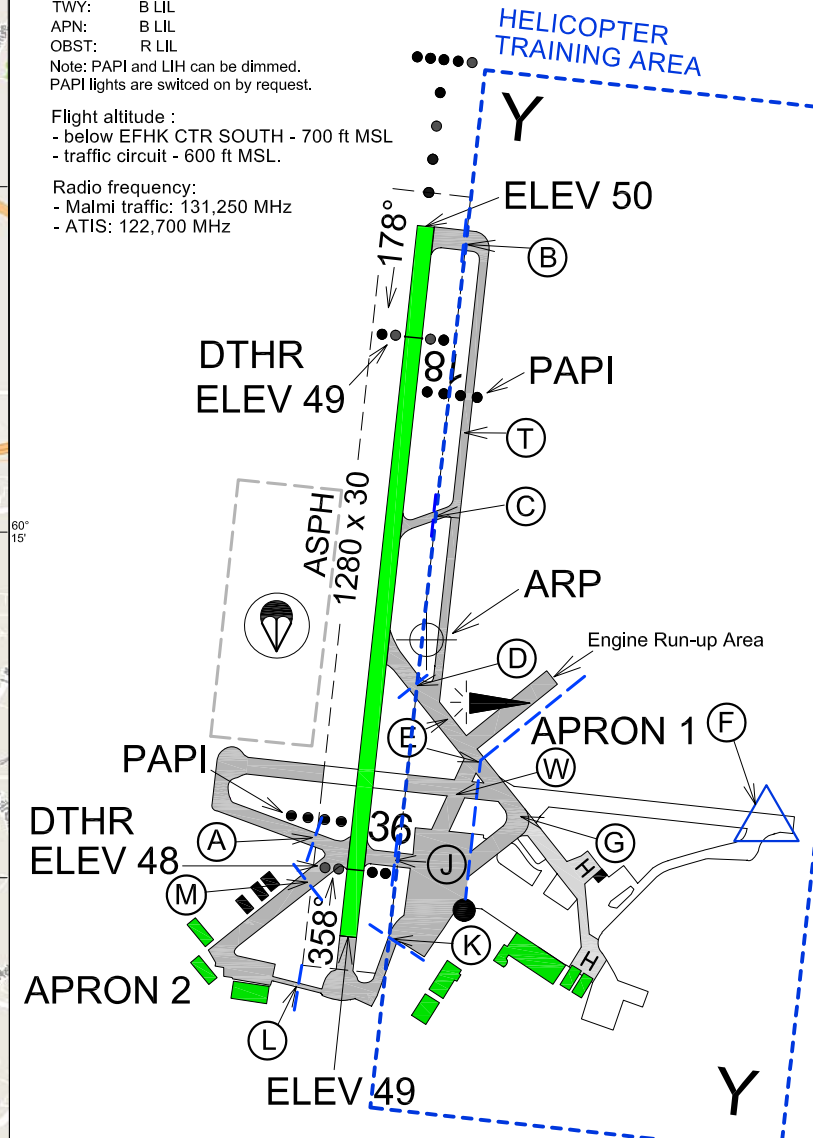
ALS:	W LIH / R LIL	RWY 18
PAPI:	4.0° MEHT 22	RWY 18
	4.0° MEHT 21	RWY 36
THR:	G LIH WBAR	RWY 18/36
REDL:	W LIH YCZ 370	RWY 18
	W LIH YCZ 420	RWY 36
RENL:	R LIH	RWY 18/36
TWY:	B LIL	
APN:	B LIL	
OBST:	R LIL	

Note: PAPI and LIH can be dimmed.
PAPI lights are switched on by request.

Flight altitude :
- below EFHK CTR SOUTH - 700 ft MSL
- traffic circuit - 600 ft MSL.

Radio frequency :
- Malmi traffic: 131,250 MHz
- ATIS: 122,700 MHz

Prior permission is required from operator prior arriving or leaving aerodrome! Information how to obtain PPR can be found at <http://efhf.fi>



CHG: editorial