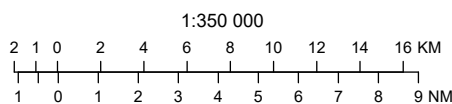
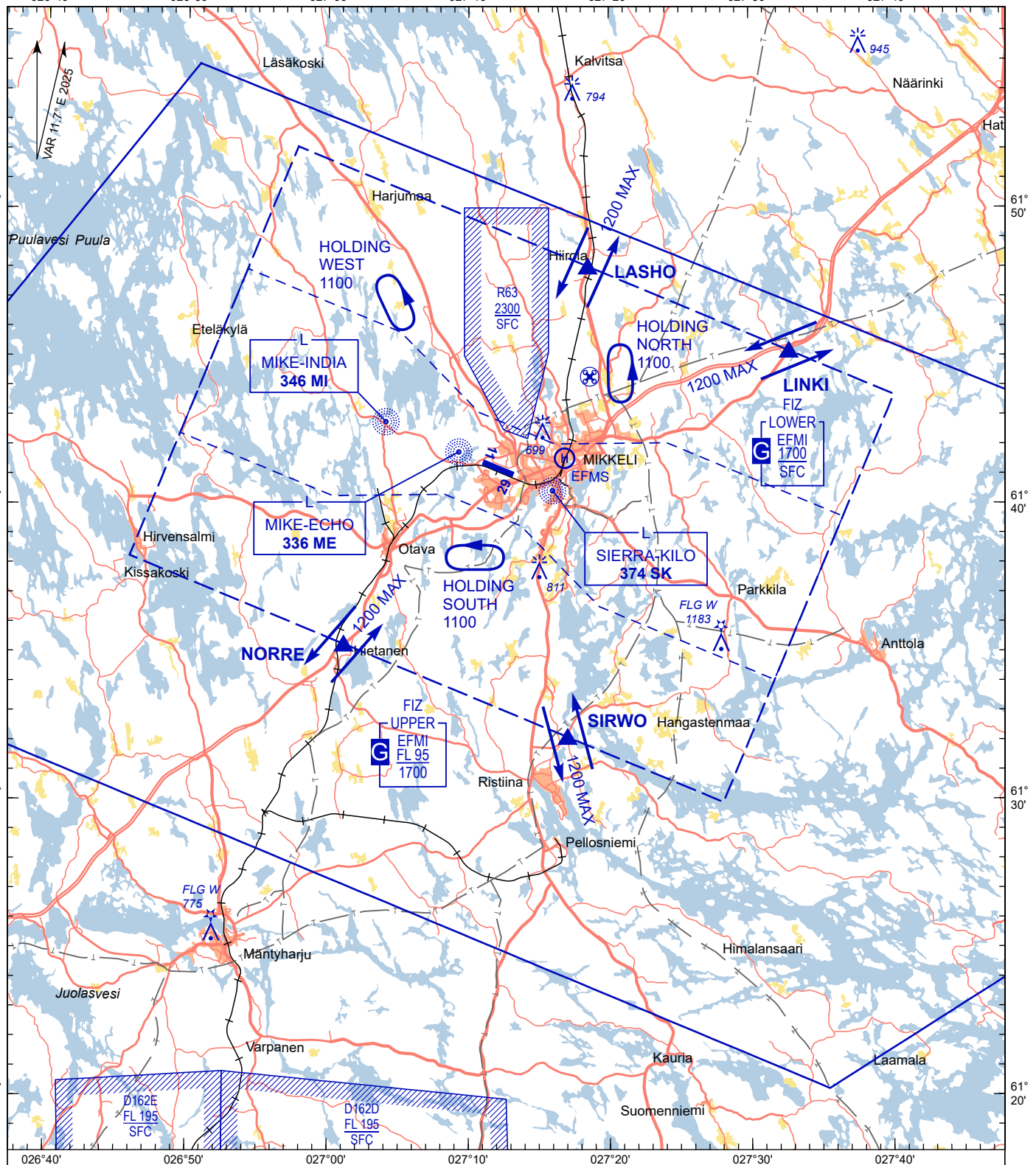


VISUAL
APPROACH CHART - ICAO

ELEV 330 FT

MIKKELI, FINLAND

CHG: MAG VAR, radio data, COR EFMI FIZ LOWER, EFMI FIZ UPPER OPR HR info. ADDN L ME, SK, traffic circuit info. DEL L M, S



ALT and ELEV in FT
Date of OBST information 28 NOV 2024

Traffic circuit 900 FT

Heliport
EFMS Mikkelin sairaalaparkki

RADIO DATA	
AFIS / VDF	123.000 121.500
ATIS (EN)	118.250

VASIS	
RWY	PAPI MEHT
11	Left / 3.5° 41
29	Left / 3.5° 49

Airspace	Hours of applicability	Airspace class	RMK
EFMI FIZ LOWER	NOTAM	G	RMZ H24
EFMI FIZ UPPER	NOTAM	G	RMZ H24